

Welcome From WEA!



The Washington Education Association (WEA) represents employees in public education in Washington state and there are more than 370 local associations affiliated with WEA. We are the state's largest public employee union and the most powerful voice and advocate for public education.

We are reaching out today to invite you to join our Association. Membership gives you the benefit of strength in numbers and a connection with other educators who believe in the promise of public education. Together, we stand strong for our students and for our profession. **If you are joining WEA for the first time, look at the following pages to review benefits and details explaining WEA membership! If you need to re-enroll because you have moved to a new district or college (and know all the wonderful benefits of being a member), [please go to the eJoin guide and link to eJoin on pages 3-4.](#)**

Why Should I Become A Member?

Your membership in WEA means you have the support of the [National Education Association \(NEA\)](#), our state's [Washington Education Association \(WEA\)](#), your regional UniServ Council, [WEA-Southeast](#), and your local education association. In addition, members can belong to affiliated groups including WEA-Retired, WEA Higher Education, and Student WEA.



Being a WEA member means:

- Accurate information amid a changing landscape in education
- Support in bargaining your local contract
- A strong voice in the Washington Legislature
- Free WEA Professional development opportunities to help keep your skills sharp (most include free clock hours)
- Free NEA Complimentary Life Insurance – automatic when you join the association
- \$1 million on-the-job NEA educator employment liability (EEL) insurance coverage
- Legal assistance from WEA attorneys (WEA Attorney Referral Program)
- Resources to help in the classroom
- Access to grants from the WEA Children's Fund, which benefits children in need
- Opportunity to attend pre-retirement seminars presented by WEA-Retired
- Money-saving discounts from NEA Member Benefits to help stretch your paychecks
- A community of dedicated educators

Don't miss out on these benefits of membership! We invite you to review, in more detail, many of the [benefits mentioned above](#)....

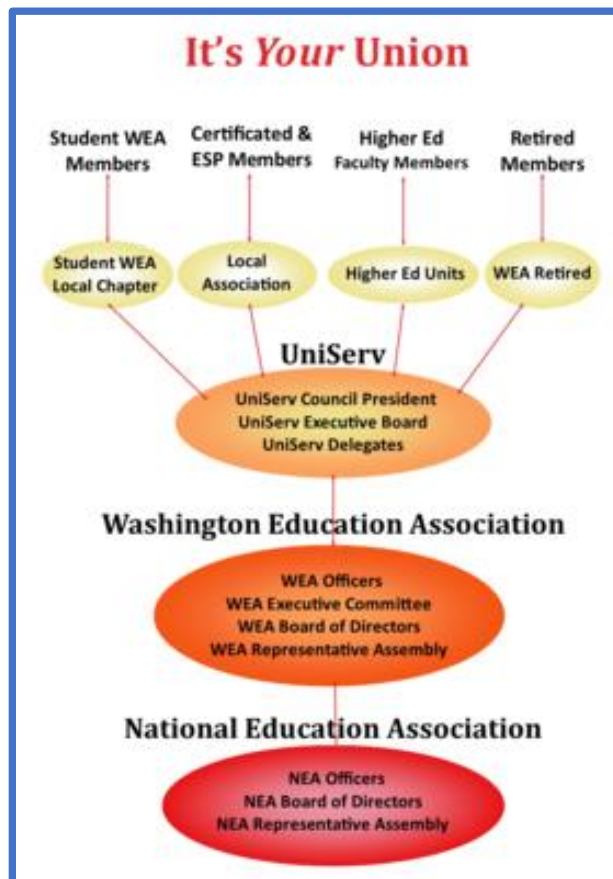
So....What Exactly Is A UniServ Council?

That's a great question – [this link](#) provides an explanation of UniServ and our role as the Regional support structure for WEA members. Your UniServ Office is WEA-Southeast, and we are located in Kennewick.

[Your Staff](#) at WEA-Southeast work hard to assist and support locals and members!!



What About My Local Association?



Your pay, benefits and working conditions are bargained into your local contract by members, union leaders and staff. We turn to you to know the issues and concerns you care about in order to make sure your interests are reflected in your local contracts. Local associations bargain hard to meet the specific needs of its members, such as paid time for digging deeper into new requirements, increased compensation, and improved working conditions.

[Please review this](#) to find your Local President's name and email contact information, if you haven't already been in touch!

Great! So How do I Join?

WEA has an online enrollment form available, called eJoin. We've included a link to eJoin (Page 4)...but first, a little more detail about using the eJoin process. It's easy and takes just a few minutes to complete.

When you fill out the eJoin form and click the submit button, an email notification with your completed Membership form is automatically sent by email to you, your payroll office, your local association, WEA-Southeast and WEA Member Records. Personal information provided in the secure eJoin process is NOT emailed. (See image to the right for the Member Form sent by email.)

After receipt of your Membership Form, payroll will begin deducting monthly dues. Certificated and ESP dues are deducted on a 12-month prorated, Higher Education dues are deducted on a 10-month prorated (no dues in July or August).



Membership Enrollment Form



www.washingtonea.org
member.records@washingtonea.org

Local: Your Local's Name will Appear here
School Building/Worksite: Your School Building will Appear here (if provided)
Name: First and Last Name
Membership Subclass: Your Membership Type (Certificated, ESP or Higher Ed)
Membership Type: Your FTE will appear here (if provided)

By entering my name below, I acknowledge that I am a member of the above-named education association, the Washington Education Association and the National Education Association. I authorize my employer to deduct from my salary and to pay the Washington Education Association membership dues in such amounts as the Association may certify as due and owing by me in accordance with its constitution and bylaws.

I agree that this authorization shall remain in effect until a signed and dated revocation is received by the WEA Membership department at PO Box 9100, Federal Way, WA 98063-9100. I understand that while I can revoke my membership, I am obligated to fulfill my dues obligation to the WEA and its affiliates during the year of revocation.

Dues payments are not deductible as charitable contributions for federal income tax purposes. Dues payments, or a portion, may qualify as a miscellaneous itemized deduction.

I have read this agreement.

Electronic Signature: Your Electronic Signature
Date and Time: The Date You Submit the Form

eJoin Guide/Instructions



Before you enroll with eJoin, please take a minute to review the following eJoin Guide.

This quick "How-To" shows how easy it is to sign up and provides the name of your local to look for in the Local "dropdown" during eJoin.

- [Certificated employees – eJoin Instruction Guide](#)
- [Education Support Professionals \(ESP\) – eJoin Instruction Guide](#)
- [Higher Education employees – eJoin Instruction Guide](#)

NOTE: If you are a certificated teacher or specialist employed full or part-time as a guest/substitute educator and you are not sure of your eligibility for membership, please reach out to Michelle at mjoy@washingtonea.org or Bridget at bsteen@washingtonea.org. (See list of locals Michelle and Bridget each work with on next page)



And Finally...The eJoin Link To Become a WEA Member!

[Click here to enroll using eJoin](#)

Questions?

If you need additional help or answers to your questions, please reach out to WEA-Southeast Staff - Michelle Joy and Bridget Steen. We are happy to help you!

- Michelle Joy- mjoy@washingtonea.org – Locals Michelle works with on dues/membership [are listed here.](#)
- Bridget Steen- bsteen@washingtonea.org – Locals Bridget works with on dues/membership [are listed here.](#)



7403 West Grandridge Boulevard

Kennewick WA 99336

509-783-6318